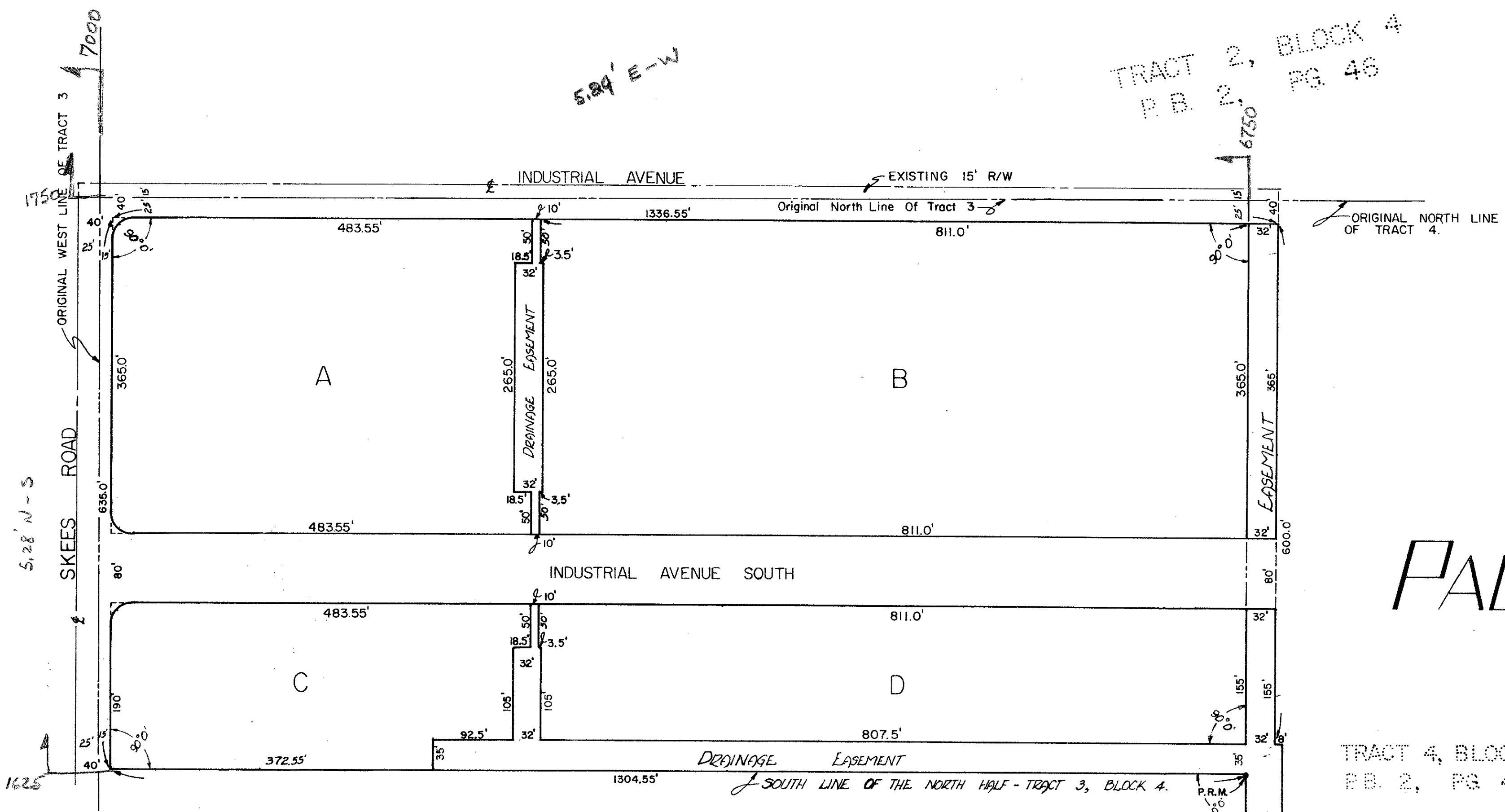
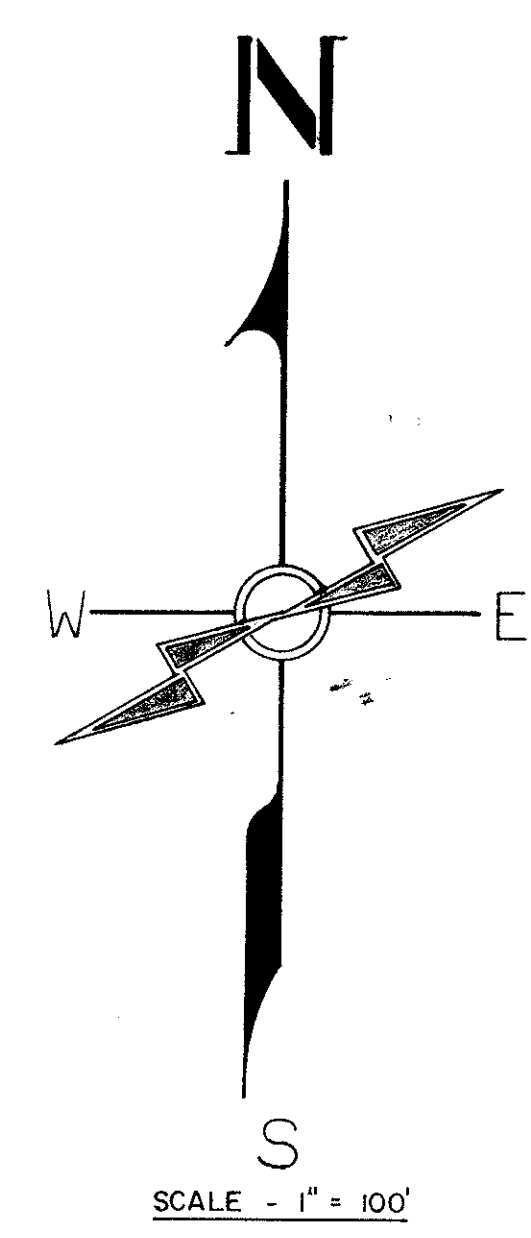
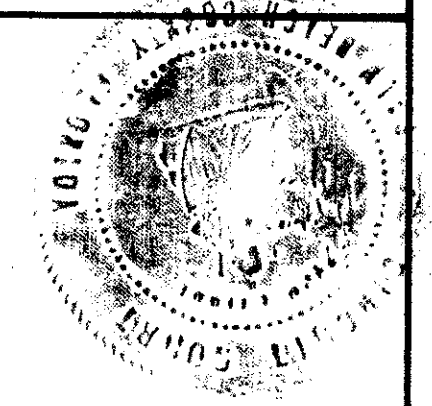


109

STATE OF FLORIDA
 COUNTY OF PALM BEACH
 This Plat was filed for record at 5:07 P.M.
 this 3rd day of July
 1962 and duly recorded in Plat Book No.
 27 on page 109
 J. ALEX ARMISTE, Clerk Circuit Court
 J. M. Blackman, D. C.



PALM BEACH COUNTY INDUSTRIAL PARK

TRACT 4, BLOCK 4
 P.B. 2, PG. 46

A REPLAT OF N. 1/2 OF TRACT 3, BLOCK 4 AND A PORTION
 OF TRACT 4, BLOCK 4, PALM BEACH FARMS COMPANY, PLAT NO. 3,
 AS RECORDED IN PLAT BOOK 2, PAGE 46, SECTIONS 27 & 28, TWP. 43 S.,
 RGE. 42 E., PALM BEACH COUNTY, FLORIDA

STATE OF FLORIDA
 COUNTY OF PALM BEACH SS

KNOW ALL MEN BY THESE PRESENTS THAT HAWKSBILL, CORP. A FLORIDA CORPORATION, THE OWNERS OF A TRACT OF LAND LYING AND BEING IN SECTIONS 27 & 28, T. 43 S., R. 42 E., ALSO DESCRIBED AS THE NORTH HALF OF TRACT 3, BLOCK 4, AND TRACT 4, BLOCK 4, PALM BEACH FARMS COMPANY, PLAT NO. 3, AS RECORDED IN PLAT BOOK 2, PAGE 46, PALM BEACH COUNTY, FLORIDA PUBLIC RECORDS, SHOWN HEREON AS PALM BEACH COUNTY INDUSTRIAL PARK, AND MORE PARTICULARLY DESCRIBED AS FOLLOWS:

- THE NORTH HALF OF TRACT 3, BLOCK 4; THE WEST 32' OF THE NORTH 625', AND THE WEST 40' OF THE SOUTH 35' OF THE NORTH HALF OF TRACT 4, BLOCK 4;
- THE WEST 40' OF THE NORTH 222.5' OF THE SOUTH HALF OF TRACT 4, BLOCK 4;
- THE WEST 547.00' OF THE SOUTH 40' OF THE NORTH 262.5'; AND THE EAST 773.00' OF THE SOUTH 45' OF THE NORTH 262.5' OF THE SOUTH HALF OF TRACT 4, BLOCK 4.

HAS CAUSED THE SAME TO BE SURVEYED AND PLATTED AS SHOWN HEREON, AND DOES HEREBY DEDICATE TO THE PERPETUAL USE OF THE PUBLIC, THE ROADS AND EASEMENTS SHOWN HEREON.

IN WITNESS WHEREOF THE SAID CORPORATION HAS CAUSED THESE PRESENTS TO BE SIGNED BY ITS PRESIDENT AND ATTESTED BY ITS SECRETARY, AND ITS CORPORATION SEAL AFFIXED HERETO THIS 37th DAY OF MARCH, A. D. 1962.

ATTEST
 BY: Martha Vidalis SECRETARY
 BY: Harold G. Maass PRESIDENT
 HAWKSBILL, CORPORATION

STATE OF FLORIDA
 COUNTY OF PALM BEACH SS

I HEREBY CERTIFY THAT ON THIS DAY, PERSONALLY APPEARED BEFORE ME, AN OFFICER DULY AUTHORIZED TO ADMINISTER OATHS AND TAKE ACKNOWLEDGEMENTS, HAROLD G. MAASS AND MARTHA VIDALIS, PRESIDENT AND SECRETARY, RESPECTIVELY, OF HAWKSBILL, CORP., TO ME WELL KNOWN AND KNOWN TO ME TO BE THE INDIVIDUALS DESCRIBED IN AND WHO EXECUTED THE FOREGOING DEDICATION, AND THEY ACKNOWLEDGED BEFORE ME THAT THEY EXECUTED THE SAME AS SUCH OFFICERS OF SAID CORPORATION, BY AND WITH AUTHORITY OF ITS BOARD OF DIRECTORS, FOR THE PURPOSES THEREIN EXPRESSED.

WITNESS MY HAND AND OFFICIAL SEAL AT Palm Beach, COUNTY OF Palm Beach, STATE OF FLORIDA, THIS 3rd DAY OF March, A. D. 1962.

Shirley Potts
 NOTARY PUBLIC

MY COMMISSION EXPIRES: August 9, 1963

ORIGINAL SOUTH LINE OF TRACT 3
 ORIGINAL SOUTH LINE OF TRACT 4

NOTES

- THERE SHALL BE NO BUILDING OR ANY TYPE OF CONSTRUCTION OR THE PLANTING OF TREES OR SHRUBS ON DRAINAGE EASEMENTS.
- BUILDING SETBACK LINES SHALL BE AS REQUIRED BY PALM BEACH COUNTY ZONING REGULATIONS.
- ALL CORNERS HAVE 25' RADII UNLESS OTHERWISE NOTED.

CERTIFICATE OF APPROVAL

APPROVED JULY 2 1962 A. D.
 BOARD OF COUNTY COMMISSIONERS

BY: Leo Lytal
 CHAIRMAN

BY: Stephen Meade
 COUNTY ENGINEER

27/109
 CERTIFICATE OF SURVEYOR

STATE OF FLORIDA
 COUNTY OF PALM BEACH

28/43/42

I HEREBY CERTIFY THAT THE PLAT SHOWN HEREON IS A TRUE AND CORRECT REPRESENTATION OF A SURVEY MADE UNDER MY DIRECTION, OF THE PROPERTY DESCRIBED HEREON, AND THAT SAID SURVEY IS ACCURATE TO THE BEST OF MY KNOWLEDGE AND BELIEF, AND THAT PERMANENT REFERENCE MONUMENTS (P.R.M.) HAVE BEEN PLACED AS REQUIRED BY LAW.

1000-300

28-43-42

Reg. Land Surveyor - State of Florida No. 1056

— DAVID H. BRADY —

SURVEYED: Nov 15, 1961

DRAWING NUMBER
 27-109

DRAWING NUMBER

DRAWING NUMBER

DRAWING NUMBER